

PROJECT NAME	
CATALOG NO.	
FIXTURE SCHEDULE	
COMMENTS	

## DESCRIPTION

SOL series comes complete with built-in PIR sensor system. Regulates automatically the light source from 100% full bright (when people move into the sensor area) to 30% dim mode (when people move away) for energy saving.



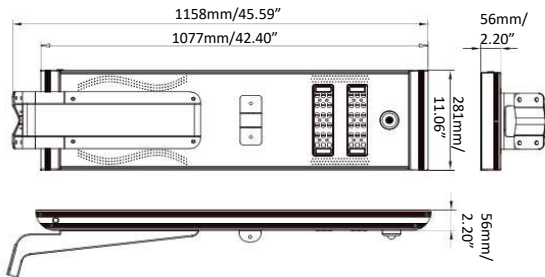
- LED Modular thermal design
- Innovative Battery Protection System
- Typhoon Resistant
- Simple installation, easy maintenance
- Each part is imaginative
- All materials are carefully selected
- Protected against all weathers
- Battery Type: Lithium LiFePO4 Battery
- Infrared Sensor: Available
- LED Brand: CREE
- Lifespan: 50,000 hours
- Beam Angle: 150x70°
- Charging Time (By strong sunshine): 6-8 hours
- Lighting Time (Full power): 12-14 hours
- Lighting Time (30% saving mode): 39 hours (3~5 rainy days)
- Discharging temp: -20~60°C/-4~140°F
- Charging temp: 0~60°C/32~140°F
- Storage temp: -20~45°C/-4~113°F

## SPECIFICATIONS

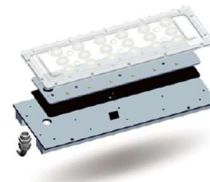
MODEL	WATT (W)	LUMEN (LM)	LUMEN (LM/W)	CRI (RA)	SOLAR PANEL	BEAM ANGLE	COLOR (K)	HEIGHT	LIGHT SPACE	DIMENSION	WEIGHT	IP	DIMMING
OML7-SOL-30	30	4200	140	>75	18V/60W	150 x 70°	3000-5700	5-7m/16-23ft	20-25m/65-82ft	1158x281x56mm/45.59x11.06x2.20"	17.0kg/37.48 lb	65	By sensor
OML7-SOL-40	40	5600	140	>75	18V/60W	150 x 70°	3000-5700	5-7m/16-23ft	20-25m/65-82ft	1158x281x56mm/45.59x11.06x2.20"	17.5kg/38.58 lb	65	By sensor
OML7-SOL-50	50	7000	140	>75	18V/80W	150 x 70°	3000-5700	6-8m/19-26ft	25-30m/82-98ft	1158x405x56mm/45.59x15.94x2.20"	21.5kg/47.40 lb	65	By sensor
OML7-SOL-60	60	8400	140	>75	18V/90W	150 x 70°	3000-5700	6-8m/19-26ft	25-30m/82-98ft	1158x405x56mm/45.59x15.94x2.20"	24.8kg/48.50 lb	65	By sensor
OML7-SOL-80	80	11200	140	>75	36V/110W	150 x 70°	3000-5700	8-10m/26-33ft	30-35m/98-115ft	1608x405x112mm/63.30x15.94x4.41"	32.0kg/70.55 lb	65	By sensor
OML7-SOL-100	100	14000	140	>75	36V/120W	150 x 70°	3000-5700	10-12m/33-39ft	35-40m/115-131ft	1608x405x112mm/63.30x15.94x4.41"	33.0kg/72.75 lb	65	By sensor
OML7-SOL-120	120	16800	140	>75	36V/160W	150 x 70°	3000-5700	10-12m/33-39ft	35-40m/115-131ft	1608x542x112mm/63.31x21.34x4.41"	36.0kg/79.37 lb	65	By sensor

\*\*Pole must be rated for 80/100/120W solar street light weight.

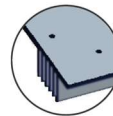
## DIMENSIONAL DRAWING



## LED MODULAR SYSTEM DESIGN



- Rectangular beam design for road lighting, with bat wing light distribution
- The well optimized light distribution, makes for a more uniform and wider lighting area
- Lens with exhaust valve, prevent water vapor gathered & makes longer lifespan
- Original thermal system design, innovative heat sink with IP67 PG head



Innovative heat sink



Rectangular beam design



Advanced exhaust valve



P67 PG head

## MOUNTING

Standard



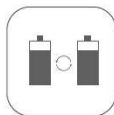
Slip-fitter (Optional)



Monocrystalline Solar Module



Efficient Controller



Battery system



CREE LED



All-in-One



Anti-Typhoon



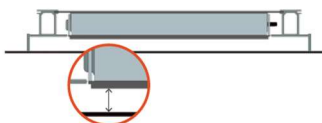
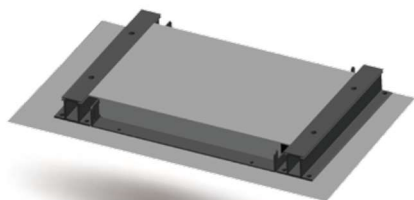
PIR motion Sensor



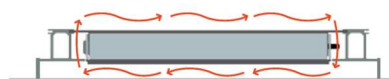
IP65

## INNOVATIVE BATTERY PROTECTION SYSTEM

- Build-in LiFePO4 class A battery, single cell with PTC
- Superior IC with military standards in battery protection board
- Waterproof, damp proof, explosion proof
- Over charging & over discharging protection



Original separate design with 5mm gap between battery and solar panel



Air convection & thermal system design  
More air flows and better heat dissipation

## ANTI-TYPHOON DESIGN



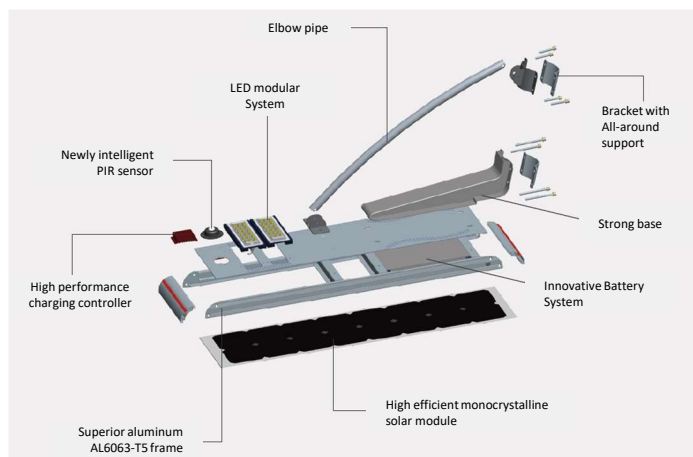
**Much Stronger**

Sectional area is 50% larger than others for thicker materials

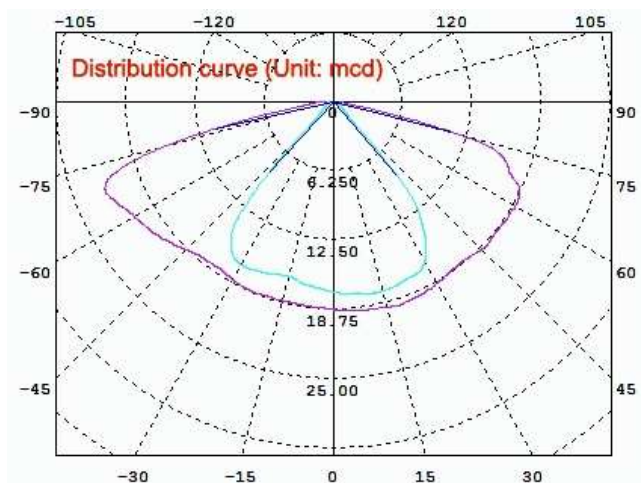


**Much Safer**

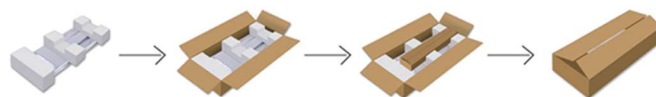
Patent hooping design with multi-point contact areas, safety increased by 30%



## DISTURIBUTION CURVE



## PACKAGE



WATT	N.W	CARTON SIZE (mm)	G.W	20GP (SETS)	40GP (SETS)	40HQ (SETS)
30w	17.0kg	1230x350x260	19.5kg	230	500	588
40w	17.5kg	1230x350x260	20.0kg	230	500	588
50w	21.5kg	1230x480x260	24.4kg	165	360	425
60w	22.0kg	1230x480x260	24.8kg	165	360	425
80w	32.0kg	1680x480x180	40.0kg	120	260	306
100w	33.0kg	1680x480x180	40.0kg	120	260	306
120w	36.0kg	1680x610x180	42.1kg	125	260	306

QTY/CTN: 1set/ctn



OMNI Imagine Inc. A: 10701 HOLDER ST. CYPRESS, CA 90630 T: 1-833-366-0321 E: SALES@OMNIIMAGINE.COM  
Copyright© by OMNI IMAGINE™ (DBA: OMNI SOLAR SYSTEM) All Rights Reserved. Specifications are subject to change without notice.

www.omniimage.com