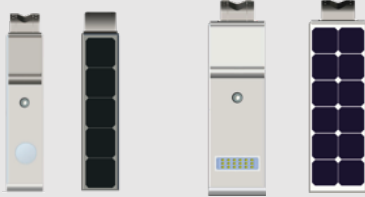


PROJECT NAME	
CATALOG NO.	
FIXTURE SCHEDULE	
COMMENTS	

### DESCRIPTION

OML7-SOL1 series comes complete with built-in PIR sensor system. Regulates automatically the light source from 100% full bright (when people move in the sensor area) to 30% dim mode (when people move away) for energy saving.



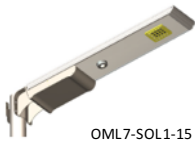
- Patent Design, Globe First
- LED Modular Thermal Design
- Innovative Battery Protection System
- High efficiency charging & discharging management system, 365 days lighting time



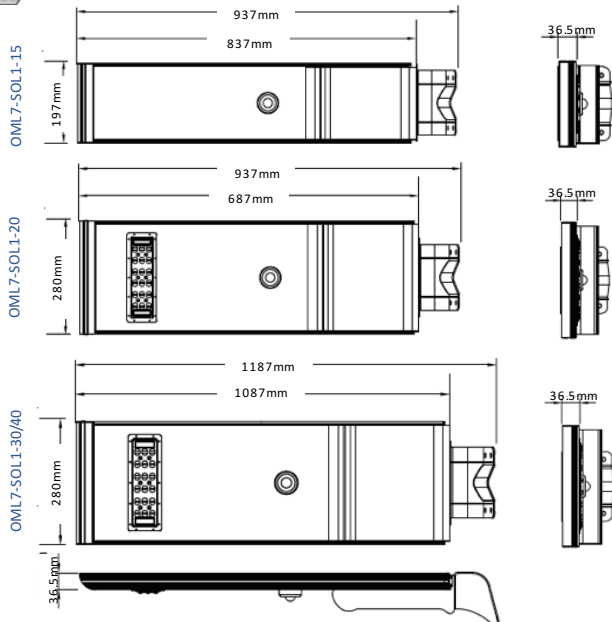
- Simple installation
- Easy maintenance.
- Each part is imaginative
- All materials are carefully selected.
- Protected against all weathers.
- Battery Type: LiFePO4 (Lifespan: 5~8 years)
- Infrared Sensor: Available
- LED Brand: CREE
- Material: Superior aviation aluminum AL6063-T5
- Lifespan: 50,000 hours
- Charging Time (By strong sunshine): 6-8 hours
- Lighting Time (Full power): 12-14 hours
- Lighting Time (30% saving mode): 39 hours (3~5 rainy days)
- Discharging temp: -20~60°C/-4~140°F
- Charging temp: 0~60°C/32~140°F
- Storage temp: -20~45°C/-4~113°F
- 5-YEAR Limited Warranty

### SPECIFICATIONS

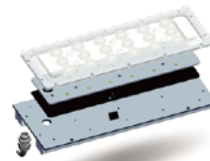
MODEL	WATT (W)	LUMEN (LM)	LUMEN (LM/W)	CRI (RA)	SOLAR PANEL (MAX POWER)	BEAM ANGLE	LED SOURCE (MAX POWER)	COLOR (K)	HEIGHT	LIGHT SPACE	DIMENSION	WEIGHT	IP	DIMMING
OML7-SOL1-15	15	1950	130	>75	18V/30W	120°	12V/15W	2700-6500	4-6m/13-19ft	10-15m/32-49ft	937x197x36.5mm/36.9x7.8x1.4"	8.5kg/19lb	65	By sensor
OML7-SOL1-20	20	2800	140	>75	18V/40W	150x70°	12V/20W	2700-6500	4-6m/13-19ft	18-20m/59-65ft	937x280x36.5mm/36.9x11x1.4"	11kg/24lb	65	By sensor
OML7-SOL1-30	30	4200	140	>75	18V/60W	150x70°	12V/30W	2700-6500	5-7m/16-23ft	20-25m/65-82ft	1187x280x36.5mm/46.7x11x1.4"	17kg/37lb	65	By sensor
OML7-SOL1-40	40	5600	140	>75	18V/60W	150x70°	12V/40W	2700-6500	5-7m/16-23ft	20-25m/65-82ft	1187x280x36.5mm/46.7x11x1.4"	17kg/37lb	65	By sensor



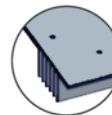
### DIMENSIONAL DRAWING



### LED MODULAR SYSTEM DESIGN



- Rectangular beam design for road lighting, with bat wing light distribution
- The well optimized light distribution, makes for a more uniform and wider lighting area
- Lens with exhaust valve, prevent water vapor gathered & makes longer lifespan
- Original thermal system design, innovative heat sink with IP67 PG head



Innovative heat sink



Rectangular beam design



Advanced exhaust valve



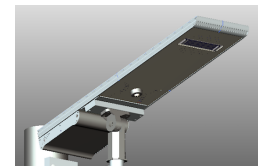
P67 PG head

### MOUNTING

Standard



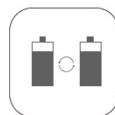
Slip-fitter (Optional)



Monocrystalline Solar Module



Efficient Controller



Battery System



CREE LED



ALL-in-One



Anti-Typhoon



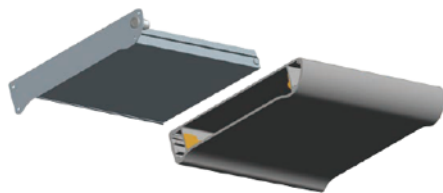
PIR motion Sensor



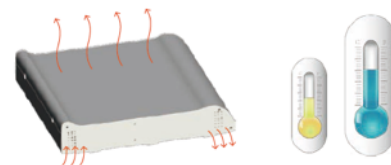
IP65

## INNOVATIVE BATTERY PROTECTION SYSTEM

- Build-in Lithium class A battery, single cell with PTC
- Superior IC with military standards in battery protection board
- Waterproof, damp proof, explosion proof
- Over charging & over discharging protection



Modular Design  
Easy installation, Free maintenance



Professional thermal & temperature controller system,  
more air flows and better heat dissipation

## ANTI-TYPHOON DESIGN

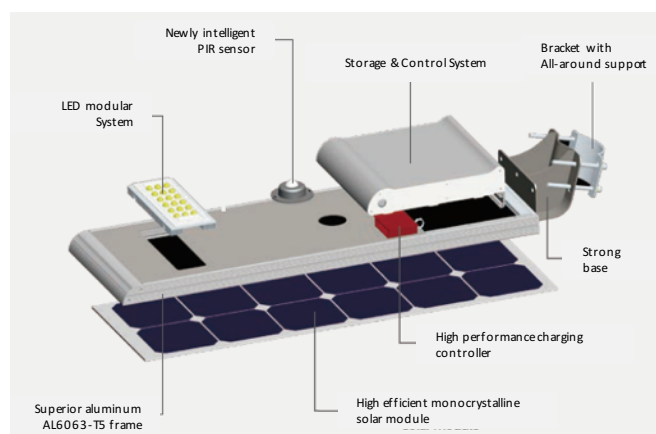


More Beautiful

Ultra-Thin Design

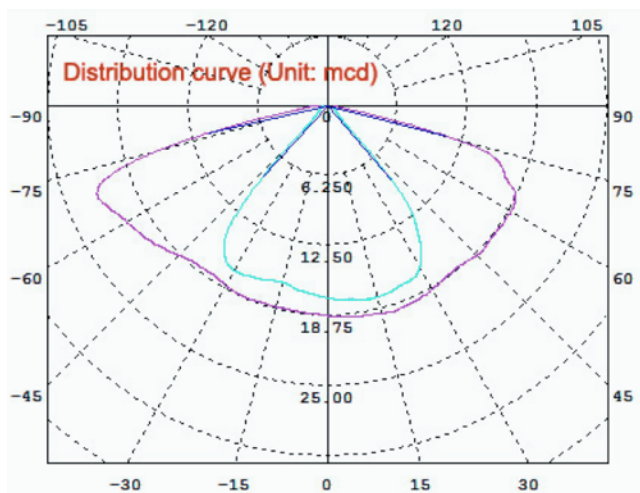
Much Safer

Patent hooping design with multi-point contact areas, safety increased by 30%



Newly intelligent PIR sensor  
Storage & Control System  
Bracket with All-around support  
LED modular System  
Strong base  
High performance charging controller  
High efficient monocrystalline solar module  
Superior aluminum AL6063-T5 frame

## DISTRIBUTION CURVE



OML7-SOL1-20

## PACKAGE

WATT	N.W	CARTON SIZE (mm)	G.W	20GP (SETS)	40GP (SETS)	40HQ (SETS)
15w	8.5kg	1267x257x240	10.5kg	325	700	825
20w	11kg	980x350x260	13kg	290	628	740
30w	15.5kg	1267x340x240	18kg	237	509	600
40w	16.5kg	1267x340x240	18.5kg	237	509	600

QTY/CTN: 1sets/ctn

