

TROFFER MODEL NAME OMJ7-TF

PROJECT NAME	
CATALOG NO.	
FIXTURE SCHEDULE	
COMMENTS	

FEATURES

- Driver: DLC4.3 (PREMIUM), UL/cUL with isolated external power supply
- 0-10V dimmable
- LED Source: SMD2835, LM80 report
- Material: ABS Frame+PC
- Ideal replacement for traditional troffer with over 80% energy saving
- Color Temp: Warm White (3000-3500K)
Pure White (4000-4500K)
Cool White (5000-5500K)

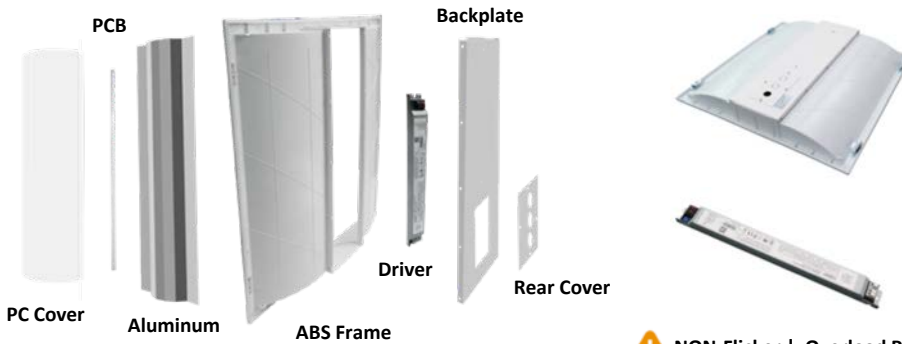


- Input voltage: AC 120-277V/50-60Hz
- PF: >0.95 Non-Flicker
- THD: <20%
- 110-120lm/W
- Color Rendering Index: CRI>80
- Power Efficiency: >90%
- Working Temp: -20~45°C/-4~113°F
- Storage Temp: -25~65°C/-13~149°F
- Beam Angle: 120°
- IP Grade: IP40
- Lifespan: 50,000 Hours
- 5-Year limited warranty



SPECIFICATIONS

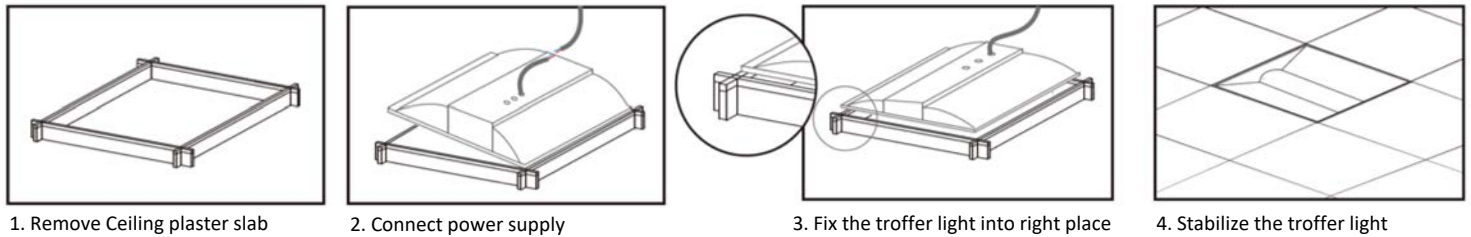
MODEL	SIZE (Ft)	WATT (W)	LUMEN (LM)		CRI	PF	VOLTAGE (V)	CCT (K)	BEAM ANGLE	IP	DIMENSION	WEIGHT	DIMMING
OMJ7-TF-22-28	2x2	28	3500	125	>80	>0.95	120-277	3000-5500K	120°	40	603x603x76mm/23.74x23.74x2.99"	2.55kg/5.6lbs	0-10V DIM
OMJ7-TF-22-35	2x2	35	4375	125	>80	>0.95	120-277	3000-5500K	120°	40	603x603x76mm/23.74x23.74x2.99"	2.55kg/5.6lbs	0-10V DIM
OMJ7-TF-24-35	2x4	35	4375	125	>80	>0.95	120-277	3000-5500K	120°	40	1213x603x76mm/47.76x23.24x2.99"	5.2kg/11.5lbs	0-10V DIM
OMJ7-TF-24-40	2x4	40	5000	125	>80	>0.95	120-277	3000-5500K	120°	40	1213x603x76mm/47.76x23.24x2.99"	5.2kg/11.5lbs	0-10V DIM
OMJ7-TF-24-50	2x4	50	6250	125	>80	>0.95	120-277	3000-5500K	120°	40	1213x603x76mm/47.76x23.24x2.99"	5.2kg/11.5lbs	0-10V DIM



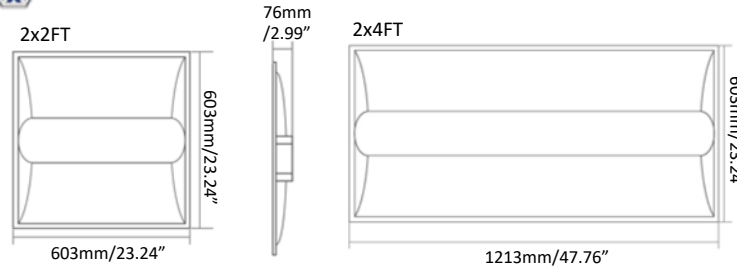
- Unique integration design, intelligent IC control.
- Circuit overload protection, short circuit protection, low-voltage protection.
- No stroboscopic, PF>0.95 and high electricity conversion efficiency.
- Low heating value, insulating PV organic materials wrapped, Absolutely guarantee that circuits and aluminum shell is completely independent insulation, safe and reliable.
- High heat dissipation type of synthetic aluminum, good heat dissipation.

NON-Flicker | Overload Protection | Short Circuit Protection | Low-Voltage Protection

INSTALLATION



DIMENTIONAL DRAWING & PACKAGE



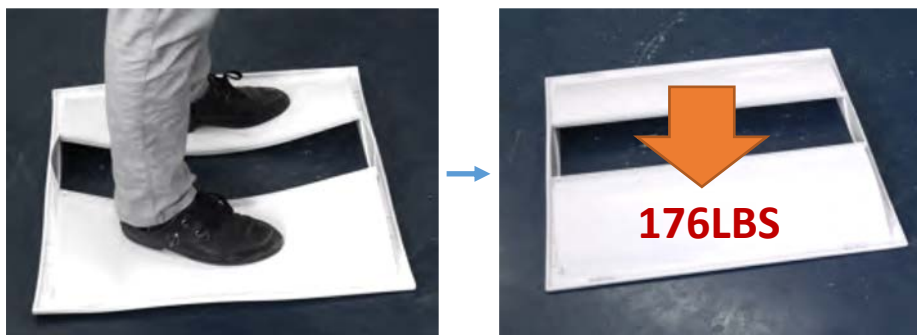
ITEM SIZE	N.W (kg/pc)	CARTON SIZE (mm)	QTY (pcs/CTN)	G.W (kg/CTN)	QTY LOADED BY 20GP CONTAINER	QTY LOADED BY 40GP CONTAINER	QTY LOADED BY 40HQ CONTAINER
2x2 FT	2.55kg	630x625x330	4pcs	14.2kg	764	1724	2000
2x4 FT	5.2kg	1235x625x170	2pcs	13.9kg	236	626	836

APPLICATION

Offices/Classrooms/Malls/Hotel/Lobbies/Back of House/Restaurants/ Bus Stations/Medical Facility



ANTI-PRESSURE TEST



Troffer adopt high-performance synthetic material, it can bear about 176 lbs without any transformation. Though the frame deform because of unilateral compression, it resumes once released, no signs of aging at all.

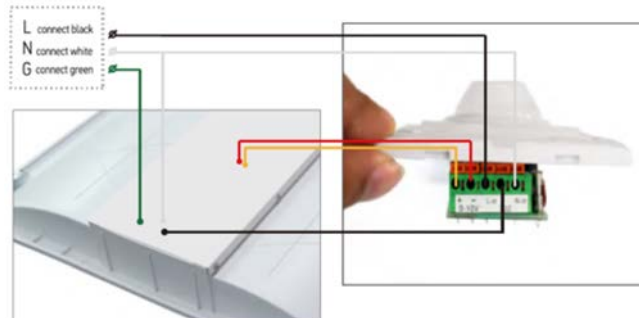
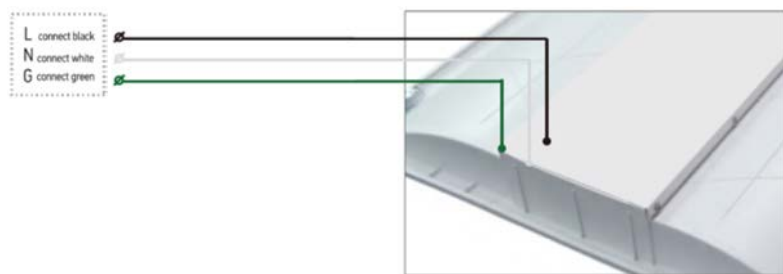
ANTI-FRAME SPREAD TEST



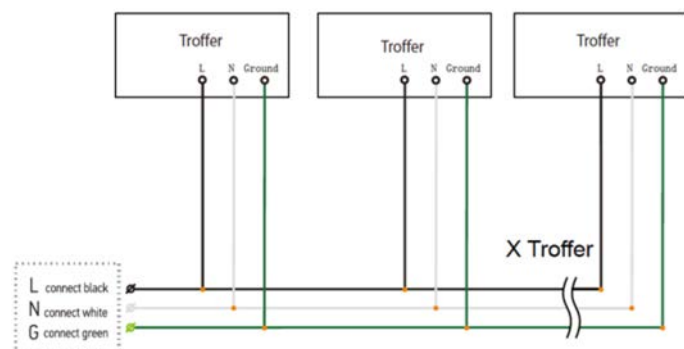
The troffer frame is mainly composed by ABS material mixed with other fireproof material, which can prevent or block the flame from spreading. The test proves that the fireproof performance is superior, completely unable to burn.

WIRE CONNECTION

WIRING OF TROFFER WITH 0-10V DIMMABLE DRIVER



WIRE CONNECTION



WIRING OF TROFFER WITH 0-10V DIMMABLE DRIVER

